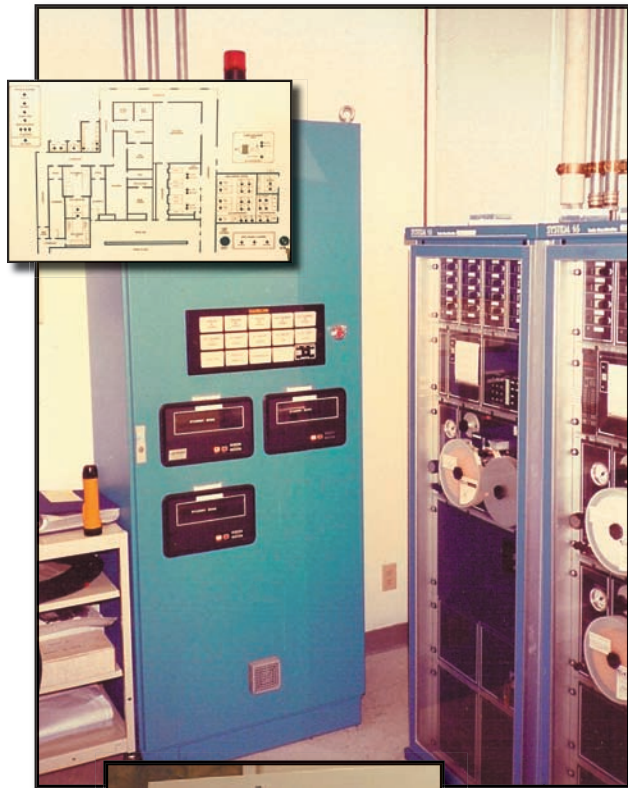


Gas Delivery Systems

All of Our Systems Exceed Quality Expectations.



Control Gas Flow and Pressure Easily

with a leak-tight and compact point-of-use panel. Gas delivery panels are simple to install and operate.

Control Gas Safely

via Toxic Gas Monitoring System and Graphic Panel. Hazardous gas detection shuts off gas at the source.

Control Gas Cleanly

using specially cleaned and assembled high-purity gas stations.

Meet Code Requirements

for FM, NEC, & NEC, ASME, NEMA classification, ABS and any special needs.

Gas Panels For Any Application



Ultra High Purity Gas Control

Pressure/flow control and distribution stations use electropolished stainless steel valves, regulators and filters connected via clean butt-weld and VCR connections

Toxic Gas Shut-off Valve Panels

Sealed enclosures for shut-off components, dual-wall tube with automatic valves

Biological Lab Distribution Panels

Maintain point-of-use flow and pressure control of atmospheric gases

Instrument Fuel Gas Supply Panels

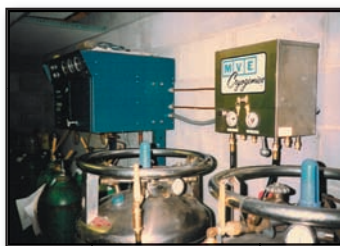
Point-of-use panels safely control the distribution of inflammable gases used in analytical tools: propane, acetylene, butane and hydrogen.

Panels for Marine Environments

HCI built the first acetylene supply system approved by the American Bureau of Shipping for shipboard installation. This panel consists of a special pressure limiting regulator, flash arresters, relief valves and solenoid shutoff valve, all selected for a marine atmosphere. If inflammable gas leaks, flow shuts off automatically and safely via a special solenoid valve rated for NEMA groups 4 and 7, incorporating an explosion-proof, water-tight and dust-tight enclosure.

Medical Gas Supply System

Western Medica Gas Manifolds, MVE Cryogenic Manifolds, Line Valve Boxes



Custom Engineered by



P.O. Box 15700 San Francisco, CA 94115
(800) 676-3689 www.healthchem.com